

# SCA – SOFTCOAT ADAPTER

POLYWEST  
SLEEVE SYSTEMS

POLYWEST  
SLEEVE SYSTEMS

# CFA – CARBON FIBRE ADAPTER

A Softcoat Adapter, also called compressible adapter, is needed for thin sleeve or ITR – In The Round technology. The thin sleeve can be used with Polymer, Elastomere, Rubber or EPDM surface.

The surface layer of the adapter is compressible which can be made in different hardness. The adapter is colored at the front accordingly in: **SOFT** | **MEDIUM** | **FIRM**.

Printers can use different hardness adapters to adjust their print to specific requirement of the design.

A soft layer is rather for fine gradients, firm for full tone and medium for combination of both.

The adapters can be used with different air supply; via air cylinder / mandrel or with separate connection.

POLYWEST adapters are always conductive according to ATEX guideline.

Special emphasis is placed on concentricity and vibration dampening.

On demand with:

- Mounting Linie
- Stopping

## COMPANY PORTRAIT

Since 1988 POLYWEST has been producing „Sleeves for Flexo Printing“ and is one of the worldwide leading system providers of plate mounting sleeves and carbon fiber adapters.

Sleeves and adapters are available in virtually all dimensions and for flexographic printing presses from almost every manufacturer, since our products are manufactured according to both customer and machine specific requirements.

In addition POLYWEST provides offset sleeves and moulded components of high-tech materials for various industrial applications.

Further information about our sleeve technology and innovative adapter systems can be obtained under [www.polywest.de](http://www.polywest.de)



Sales Manager: Michael Bormann  
Managing Director: Jörg C. Saueressig  
Managing Director: Michael Kockentiedt

Ver. 4.0 March 2016

# SLEEVES!

We live them!



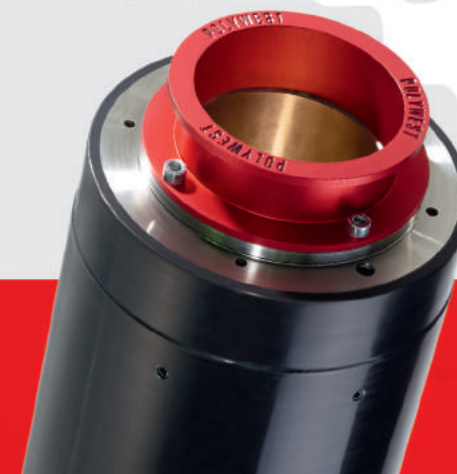
With the Carbon Fibre Adapter, also called Bridge, the printer can bridge big differences and reach big repeats, which are far away from mandrel diameter.

Adapters with small wall thickness sleeves on top had weight advantages in comparison to standard high wall thickness sleeves in the past. Today it is a commercial decision to use CFA or not.

Adapters are mounted in general with air cushion principle as sleeves, hydraulic clamping version is also available. The air supply for mounting the sleeves can come from the air mandrel or with separate air connection.

The POLYWEST adapter is always conductive according to ATEX 95 guideline. The robust and longevity high performance carbon fibre layer is made for often use and has same tolerances after years.

Special emphasis is placed on high concentricity, smooth running and vibration dampening.



Ridderstraße 42 48683 Ahaus (Germany)  
Tel. +49 (0) 2561-9321-0 E-Mail: [vk@polywest.de](mailto:vk@polywest.de)  
Fax +49 (0) 2561-9321-40 Web: [www.polywest.de](http://www.polywest.de)

POLYWEST KUNSTSTOFFTECHNIK  
Saueressig & Partner GmbH & Co. KG



## RUBIN+

### STANDARD VERSION

The new generation of „+“ has always an additional reinforced glass fibre layer for highest stability.

The Rubin+ sleeve is for water based and UV-ink in general. Whereas the none-conductive red surface can be used for solvent based ink also.

Standardized production on top of parallel mandrel, most often according to “Stork” list, guarantees the compatibility with all mandrels and adapters worldwide.

In general the hard sleeve is used with compressible tape and a polymer plate.

The production of Rubin+ sleeve is possible from 1 mm up to 150 mm wall thickness commonly. The hardness according to DIN53505 is about 75° Shore D.

#### ADD-ONS:

- Notch(es); milled or reinforced by hard plastic depending on wall thickness
- Aluminum or stainless steel ring
- Mounting line(s)

## ONYX+

### CONDUCTIVE STANDARD VERSION

The new generation of „+“ has always an additional reinforced glass fibre layer for highest stability.

The Onyx+ sleeve is for solvent based ink according to ATEX guideline. Whereas the black surface can be used for water based and UV-ink also.

Standardized production on top of parallel mandrel, most often according to “Stork” list, guarantees the compatibility with all mandrels and adapters worldwide.

In general the hard sleeve is used with compressible tape and a polymer plate.

The production of Onyx+ sleeve is possible from 1 mm up to 150 mm wall thickness commonly. The hardness according to DIN53505 is about 80° Shore D.

#### ADD-ONS:

- Notch(es); milled or reinforced by hard plastic depending on wall thickness
- Aluminum or stainless steel ring
- Mounting line(s)

## PREMIUM SLEEVE

### LIGHTEST VERSION

The Premium Sleeve is ultra-light, has different glass fibre layers as well as very hard reinforced ends.

Though the sleeve is made very light it has enormous longevity stability.

Rubin and Onyx Premium Sleeves start from 15 mm wall thickness. Easy rule: the longer and thicker the sleeve, the more sense to choose the ultra-light Premium version.

With different quotes you can compare price-weight ratio and how many adapters you need or if you can work with one “mother” steel mandrel only – without adapters. The Premium version is possible up to 3 m length and all sleeves get very hard reinforced ends.

#### ADD-ONS:

- Notch(es); reinforced by very hard plastic
- Aluminum or stainless steel ring
- Mounting line(s)

## SOFTCOAT+ SLEEVE

The Softcoat Sleeve has very precise made compressible surface with shore hardness tolerance of +/- 2° only which is made in a climate-controlled room.

POLYWEST can not only do soft, medium and firm surface but can do also specific hardness for special customer requirement.

The new „+“ version with additional glass fibre layer is also the base of the Softcoat Sleeve therefore it is also possible to make a Premium ultra-light version.

The compressible sleeve is used with a hard 0,1 mm tape plus polymer plate. A production is possible from 3 mm up to about 150 mm wall thickness in general.

The surface is soft according to DIN53505: Shore A and hardness is made according to customer requirement.

#### ADD-ONS:

- Notch(es); milled or reinforced by hard plastic depending on wall thickness
- Aluminum or stainless steel ring
- Mounting line(s)

