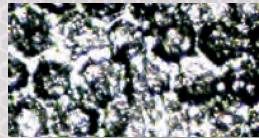


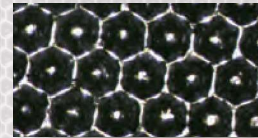
CeramClean II™

CeramClean II™ will effectively and efficiently remove dried ink from the engravings on your anilox without damaging the cell structure on ceramic and chrome cylinders. It will remove Water, UV and most Solvent-based inks.

Available in: 2 Packs (2-16 oz. bottles), 8 Packs (8-16 oz. bottles), 1 gal. tub, 5 gal. containers and drums.



BEFORE



AFTER



Ceram Solv-It™

This cleaner is specifically for solvent-based inks, adhesives, and coatings. It is a real marvel for the solvent ink user that has a hard time getting all of the dried ink from the bottom of anilox cells.

- Liquid spray. It's incredibly quick, and easy to use on press.
- Contains unique, gentle corrosion inhibitors to prevent rusting.
- Environmentally friendly: contains no petroleum distillates and is biodegradable.
- It features a pleasant scent.
- It works fast so you don't have to spend much time cleaning.

Available in: 4 Packs (4-32 oz. bottles), 12 Packs (12-32 oz. bottles), 5 gal. tote, and 55 gal. drums.



Multi-Purpose Master Mix™

Use it to clean water-based inks on: Anilox Rolls, Rubber Rolls, Printing Plates, Ink Pumps, Ink Pans, Inks Hoses, Doctor Blade Chambers, Press Frames, and Press Room Floors.

TECH TIP - Cleaning an anilox roll while the ink is wet will minimize or eliminate the need for potentially damaging off-press cleaning systems

Available in 2 oz. packet boxes of 11, 22 or 44 pack, 5 gal. container, and 55 gal. drum.



AltraWash Green™ & AltraWash Blue™

Both are concentrated cleaners specifically designed & formulated to be safe & effective in Pressure Washing Systems, Soak Tanks, Ultrasonic Tanks, and/or as an “on press” anilox roll cleaner. Most importantly, both are cleaning formulas that are non-corrosive to aluminum.

Containing no petroleum distillates or environmentally hazardous chemicals; their advanced surfactant technology is exceedingly friendly to the environment.

They are biodegradable, low vapor pressure, low V.O.C cleaners with a pH level of 11.8.

Available in: 1 Gal., 5 Gal., 30 Gal., 55 Gal., and 275 Gallon containers.



*For Cleaning
Solvent & UV Inks*



*For Cleaning
Water Based Inks*

Recommended Mixing Ratio for Cleaning Applications

Ultrasonic Tanks	3to1
Pressure Washing Systems	4to1
Soak Tanks	4to1
Press Side Cleaning	5to1
Ink System Flushing	10to1



UV Re-Leez™

UV Re-Leez™ is a cleaner specifically formulated for cleaning UV inks on narrow web presses, anilox rolls, and general cleaning. The cleaner's advanced surfactant technology is exceedingly environmentally friendly, using no petroleum distillates or environmentally hazardous chemicals. It is a biodegradable, low vapor pressure, and low V.O.C cleaner.

- It can be diluted 10 parts water to 1 part UV Re-Leez for light cleaning, 5 to 1 for everyday cleaning, and full strength for heavy cleaning.
- Safe and effective for Ultrasonic Tank use. A one-week soak test found that UV Re-Leez is non-corrosive for aluminum.

Available in: 4 Packs (4-32 oz. bottles), 12 Packs (12-32 oz. bottles), 5 Gal. Tote, and 55 Gal. drums.



Performance Wash™

The Harper Performance Wash™ is a fast-acting, low-foam, highly alkaline-based anilox roll cleaner. It is suitable for use in removing Water-based, UV and Solvent inks. The Harper Performance Wash™ is engineered to clean through multiple layers of ink to the bottom of the cells.

It can be used in Automatic roll cleaning machines and Ultrasonic machines with rinse cycles. The unique formula requires less heat than conventional products and is active at room temperature. If heating the cleaner is desired, we recommend operating at or below 100°F.

TECHNICAL SPECIFICATIONS:

The Harper Performance Wash™ is concentrated and can be diluted with tap water. Dilution recommendations are as follows:

Automatic roll cleaning units. Mix 1 part Harper Performance Cleaner with 1 part water.

Ultrasonic tanks. Mix 1 part Harper Performance Cleaner with 20 parts water.

NOTE - Dilutions can be varied depending upon type of ink and the condition of the roll.

Available in: 1 Gal., 5 Gal., 30 Gal., 55 Gal., and 275 Gallon containers



Anilox Surface Cleaner™

This specially formulated cleaner is ready-to-use and is designed to remove surface stains and residue blemishes from the surface of ceramic anilox rolls. The proprietary emulsifier helps to break down and loosen surface stains including water and ink marks, surface line blemishes, and coating residue. It is especially effective on coatings containing silicone. Anilox Surface Cleaner™ can also be used on press components and accessories. Great to use in combination with X-Cel™ pads.

Available in: 4 Packs (4-32 oz. bottles), 12 Packs (12-32 oz. bottles), 5 Gal.Tote, and 55 Gal.drums.














CROSS REFERENCE GUIDE

Aluminum Safe Ink Cleaners

PRODUCT SHEET

HARPERSCIENTIFIC
DIVISION

	Specially Formulated to Remove:	It can also be used to remove:	Can it be used to clean Rubber Rolls?	Can it be used to clean Printing Plates?	Mixing Ratio for cleaning Printing Plates	Can it be diluted/ mixed with water for general cleaning?	Mixing Ratio for manual/hand anilox cleaning	Can it be used in Ultrasonic Tanks?	Mixing Ratio for Ultrasonic Tanks	Soak Tanks & Auto - Wash Systems Incl. Mixing Ratio
 	 Water-based, UV, some solvent inks, coating and adhesives	Stains on ceramic rolls	Not Recommended	Not recommended	N/A	No	N/A	No	N/A	No
	Water & Solvent Inks in Automatic Roller Cleaning Machines with Rinse Cycles	UV Inks	Yes	Yes By Hand or Wash Tank <small>Best to test if cleaning cycle is longer than 30 min</small>	1 to 1 with the tank heater off	Yes <small>It's not recommended on painted surfaces</small>	10 to 1 water to PW	Yes	10 to 1 water to PW run at less than 100F	1 to 1 with tank heater off
	Standard Water-Based Inks	Ink System flush for corrugated. 2 oz for 5 gal of water	Yes, for natural or synthetic rubber	*Yes, Water-based must rinse thoroughly (Mounted)	2 oz to 1 quart of water	Yes	2 oz to 5 gal of water	No	N/A	Soak Tank Only, 2 oz per gal. Mix with hot water with heat
	Higher pH Water-Based Inks	General press cleaning at 10 to 1	Yes. Must rinse thoroughly	*Yes, Water-based must rinse thoroughly (Unmounted)	7 to 1	Yes	(5 to 10) to 1 depending on ink system	Yes, heat at 120F to 140F	4 to 1	Both at 3 to 1 at 120F-140F
	Higher pH Water Water-Based Inks <small>Caution: Use On Steel Bases Only</small>	Heavy ink buildup cleaning 5 to 1	Not recommended	*Yes, Water-based must rinse thoroughly (Mounted)	10 to 1	Yes	4 to 1	Yes, heat at 120F	4 to 1	Soak Tank Only 4 to 1 with heat
	Solvent inks, Adhesives & UV Coatings	Will work on some paste inks	EPDM Synthetic rubber rolls only	*Yes, Solvent Inks, must rinse thoroughly (Unmounted)	N/A	No	Use full strength	No	N/A	No
	Solvent & UV Inks	General press cleaning at 5 to 1	Not recommended	*Yes, Solvent & UV, must rinse thoroughly (Unmounted)	7 to 1	Yes	5 to 1	Yes, heat at 120F	3 to 1	Both at 4 to 1 water & 2 to 1 for UV & Solvent 120F - 140F
	UV Inks	Cold seal water base adhesives	Not recommended	*Yes, Solvent & UV, Must rinse thoroughly (Unmounted)	7 to 1	Yes	5 to 1	Yes, without heat	4 to 1	Both at 3 to 1 at Room Temp to 100F
	Solvent Silicone Coatings	Great ceramic stain remover used with X-Cel™ Pads	Not recommended	Not recommended	N/A	No	Use full strength	No	N/A	Not recommended

NOTE: - All of the above recommendations are for general use. It is best to always run a test before using a cleaner.
 - Ratios listed are with water as the first number and chemical as the second number. In general, best safety practice is to add chemical to water, not water to the chemical.
 * Because of all the different plate materials, it is best to not soak a plate with any chemical. Test on an old plate first.

8,30,18



Learn more about Harper Corporation of America at www.harperimage.com

Anilox Roll Scrub Brushes

A good quality anilox roll scrub brush is perhaps the most cost-effective maintenance tool your press operator can have. With a good brush, cleaning is faster, and you won't waste time struggling to achieve color from a dirty roll. Each bristle is engineered at .003" diameter to be able to penetrate the bottom of the cells.

TECH TIP - Keep your anilox rolls clean and in good shape by cleaning after each use, scrubbing in a circular motion.

★ The Duro-Brush™ brushes are designed with tapered, extended life plastic handles that resist the impact of water and pressroom chemicals.



Printing Plate Brushes

Specially designed bristles developed to designed bristles designed to clean printing plates without the worry of damage. Maintains low water absorption and has excellent bristle recovery.

★ The Duro-Brush™ brushes are designed with tapered, extended life plastic handles that resist the impact of water and pressroom chemicals.



NOTE - Also available are the **Digi-Tek™** sponges, ideal for cleaning those delicate digital plates. Since the dot head is larger than the stem on digital plates, the dot is more easily damaged. This solvent-resistant sponge can be used in conjunction with almost any cleaner to clean delicate plates without snagging the dots.



Ultimate Lint-Free Rags™

Guaranteed lint-free and sold by the pound for your convenience. These rags are great for lint-free clean-up of plates, rubber rolls, anilox rolls, chamber systems, and pharmaceutical environments.



X-Cel Pad™

The X-Cel™ pad is the best development in anilox cleaning applicators since the stainless steel brush. The unique molecular structure boosts the cleaning power of the chemical and breaks down the layers of ink with each wipe. It can be applied to many different applications in your pressroom. It is effective with water-based, solvent, UV inks, and coatings. Surface stains and blemishes on the anilox surface can be easily removed with the X-Cel™ pad. It can be used dry, or use it with your favorite cleaner.



The Poulsonator™

Designed for cleaning anilox rolls, this dual brush scrubber is air operated to take the elbow grease out of the equation. Reduces clean-up time by up to 70%.

- Dual brush orbital action.
- Reduces downtime.
- Increases process efficiency.
- Adjusts for roll diameter to 8".
- Available with Stainless Steel brushes for ceramic rolls or Brass brushes for chrome or gravure rolls.



Lab-In-A-Box™

A quick and easy way to evaluate your rolls without the hassle of downtime. Echocheks™ will give you a mirror image of your anilox engraving.

Your Lab-In-A-Box™ allows you to view the anilox engraving to determine:

- The quality of your anilox engraving.
- The condition of your anilox rolls to maintain proper print quality.
- Appropriateness of the cell engraving for your work.

NOTE - We also recommend the use of a handheld microscope to help monitor the condition of your anilox inventory and view anilox cells to check for wear damage and plugging.



TRM-C 400x Microscope



ProFilter™ Strainer

The ProFilter™ Strainer traps steel particles and debris. These unwanted debris then remain trapped in the mesh strainer of your ProFilter™ until it is cleaned. Cleaner inks result in optimum print quality as well as assistance in anilox scoring prevention. Mesh strainer included and available in 20 or 40 mesh screen.

For best results, use with the Metal Catch-It™ Large Magnet. Magnet sold separately.



Metal Catch-It™ Magnets

These powerful magnetic bars are easily retrofitted for easy installation into your ink filters, ink pan, or ink bucket.

- Metal Catch-It™ Large Magnets (for filter applications) come with a cleaning sleeve of 304 stainless steel and have a mounting hole.
- Metal Catch-It™ with Tank Bracket is easy to use. It will capture all metal particles from your ink bucket.
- Plug Magnets are also available for use with ink pans. Simply place one on the inside of the pan and one on the outside of the pan so they make contact. Size of each plug magnet is 0.50" tall x 0.50" in diameter.



Plug Magnets



Metal Catch-It™ with Tank Bracket

ChipFix™

It saves you time and money by allowing repair of your chipped anilox rolls in-house. If chipped ends are not repaired, they can introduce large particles of ceramic and/or doctor blade material into your process, and these can contribute to score lines.



Echo-Pro™ & Echo-Cover™ Roll Covers

These covers will reduce downtime by keeping your rolls clean, safe from nicks & scratches, and ready for immediate changeovers.

- Constructed of vinyl and inner-lined with thick industrial felt padding, these covers are custom made to fit your roll specifications exactly.
- Clear identification pockets make roll inventory access quick and easy.
- Velcro closures allow for easy installation.
- Echo-Cover™ roll covers are not padded and only cover the anilox roll surface.



Shield-Pro™ Roll Covers

Shield-Pro™ roll covers are used to prevent damage to anilox rolls, cylinders, mandrels, plate-mounted sleeves, etc. They can be applied to rolls without removing from press.

- Any length available.
- Easily cleaned and solvent resistant.
- Edge-to-Edge overlap to ensure complete protection.
- Diameters available from 2.5" to 12".

Shield-Pro™ SLIT is specially designed for all rollers and sleeves where installation on the anilox roll on press is required.

Shield-Pro™ UN-SLIT is specially designed for installation from the end of a sleeve when it is in service configuration for removal and or changing.



Cylinder Wrack™

The plate cylinder design of the Mark Andy P-Series presses integrates the shaft and bearings into the cylinder assembly. The P-Series cylinders have bearer discs on each end of the shaft. For this reason, they do not fit into any traditional storage solutions. HarperScientific's Cylinder Wrack™ utilizes the space between the bearer and cylinder and opposite bearer and gear to support these cylinders horizontally.



Roll Master™ A-Frame Model

The A-Frame model allows the press operator to quickly find the right anilox for the job. This rack can facilitate anilox roll faces up to 12" in length.

- Includes heavy duty swivel casters.
- Includes a handle on one side for ease of pulling.
- Includes safety hooks.



Roll Master™ 4-Sided Model

Allows the press operator to quickly find the anilox needed for the job. It is custom made to your specifications.

- 4-Sided structure to ensure stability & easy use.
- Includes heavy duty casters.
- Handle on all sides to allow you to pull from any location.
- Includes safety hooks.



SleeveWrak™

Custom made and designed to help keep sleeves safe while in storage. They can be configured to almost any anilox, plate, or bridge sleeve size. Standard cart features 2 rows of guides per layer and is able to incorporate up to 3 layers and/or 3 rows of guides for mid-web and narrow web sleeve diameter sizes. The number of sleeves you can store per row on each layer may vary from 12 to 20 depending on the sleeve's diameter. The EL Easy-Load upper guide feature is available for sleeves above 40 lbs. All SleeveWraks are carefully powder coated and include padded decks and 5" non-sparking casters.

